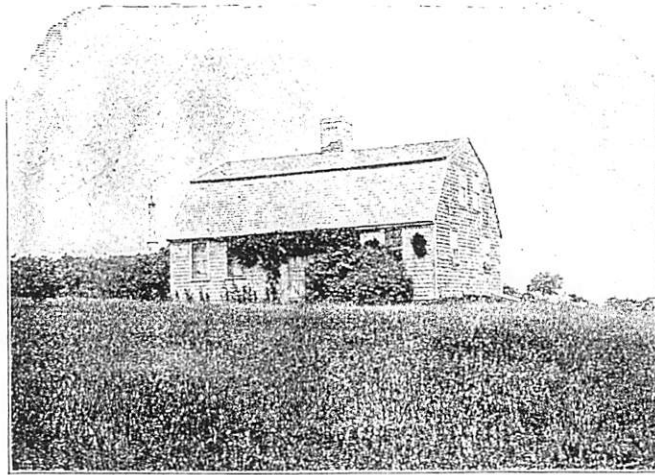
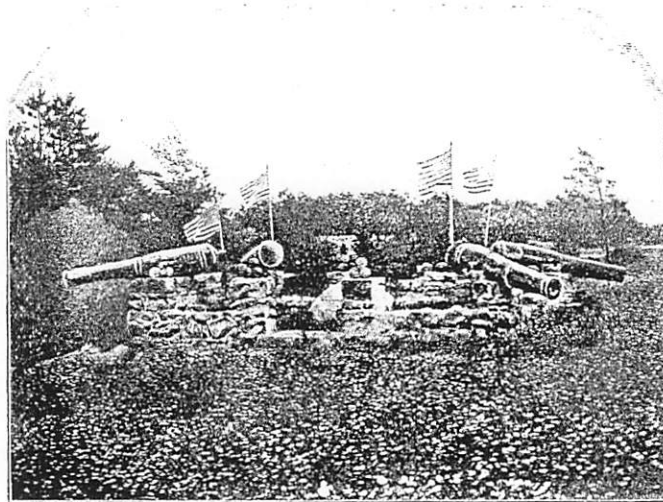


STANDISH HOUSE



Alexander Standish House.

Within a short walking distance is the Standish House, built in 1666, and the Standish Monument, finished in 1889. With the exception of the Washington Monument, this is the highest pedestal erected to the memory of a single person. The Standish House was occupied by Alexander, the son of Myles Standish, who married the daughter of John and Priscilla Alden; names which have become household words through Longfellow's poem.



COPYRIGHT 1896 by C. E. BOLLES.

The Grave of Myles Standish.